

## **Scope of Work**

Supply & Installation of Network equipment & Cabling  
For CARE Moulavibazar Regional Office with the following technical requirements

### **Objective:**

CARE Bangladesh will establish a new office in Kulaura, Moulavibazar for project operation. For this office, we are planning to set up a data network. The total LAN users will be for this office approx. 40 nos. For this installation, we will use new / existing ICT equipment. Detailed requirements and other information have been mentioned in the document.

The estimated Data Connection Point will be approximately: 48 nos. The exact location of each user Data point will show on the spot. The quantity mentioned on the basis of the current estimate which may vary at the time of installation.

The supplier needs to install all equipment, Testing & Commissioning, Marking & Labeling, Layout documentation, handover etc. as outlined in the scope of work. Equipment will be configured by the CARE authority.

### **Contact Details:**

#### **A. Installation site location address:**

CARE Kulaura Regional Office  
Ward# 02, Kulaura Pourashava  
Dist: Moulavi Bazar  
Ground and 2<sup>nd</sup> Floor.  
Land Owner: Md. Abdul Kuddus  
Location: 24.530890752461104, 92.04022993801692

## Technical Details:

### Office Network Block Diagram:

#### 2<sup>nd</sup> Floor (Flat-A)



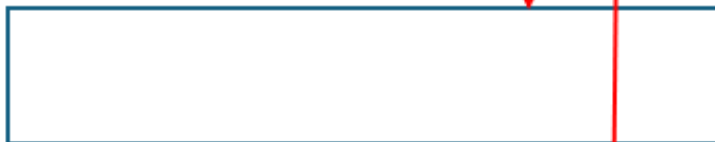
SW-1: 24 Port Managed Switch (PoE)

#### 2<sup>nd</sup> Floor (Flat-B)



SW-2: 16 Port Un-Managed Switch (non-PoE)

#### 2<sup>nd</sup> Floor (Flat-C)

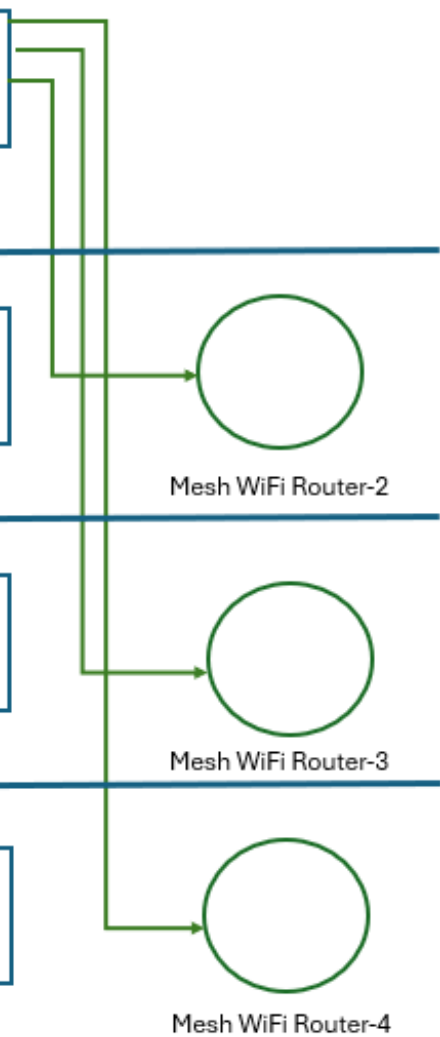


SW-3: 16 Port Un-Managed Switch (non-PoE)

#### Ground Floor

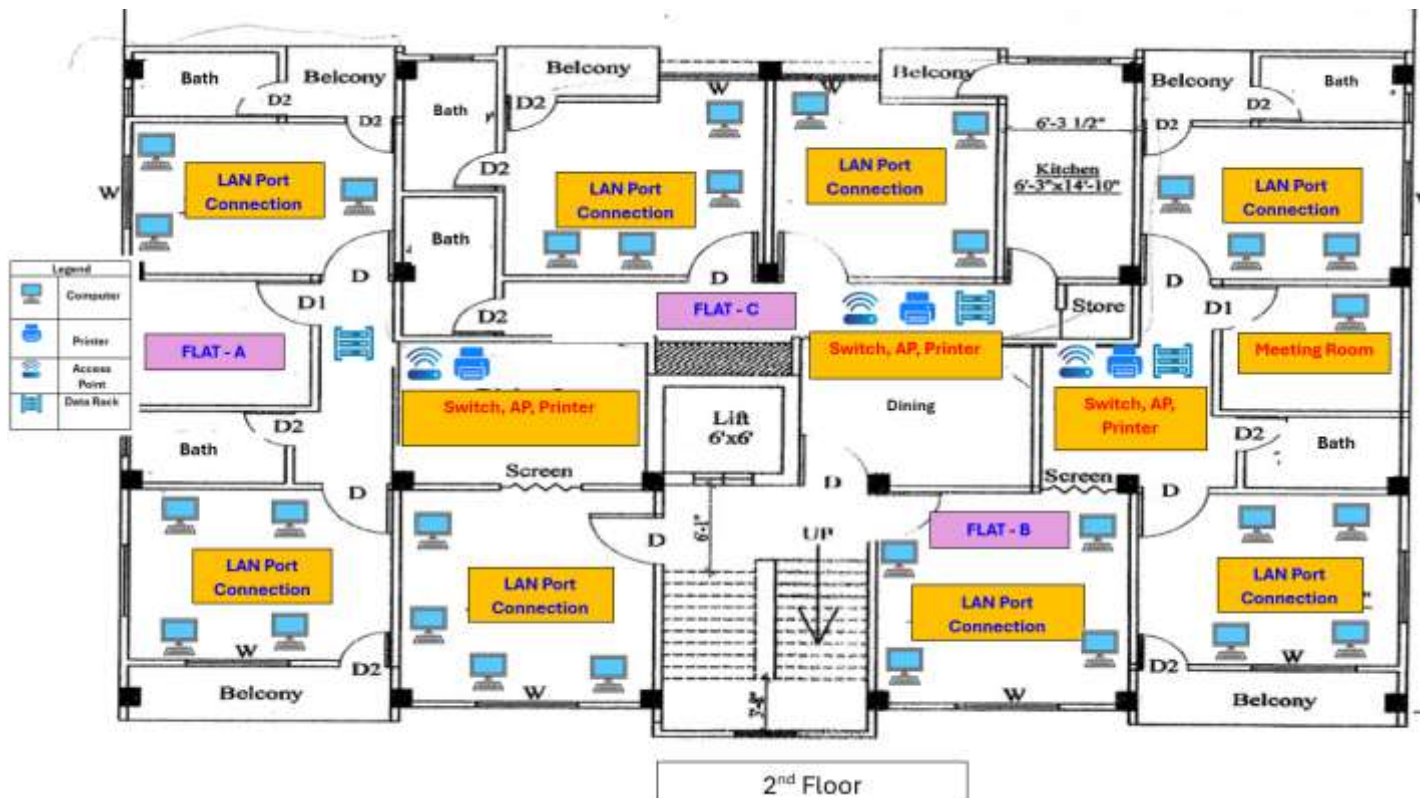


SW-4: 16 Port Un-Managed Switch (non-PoE)

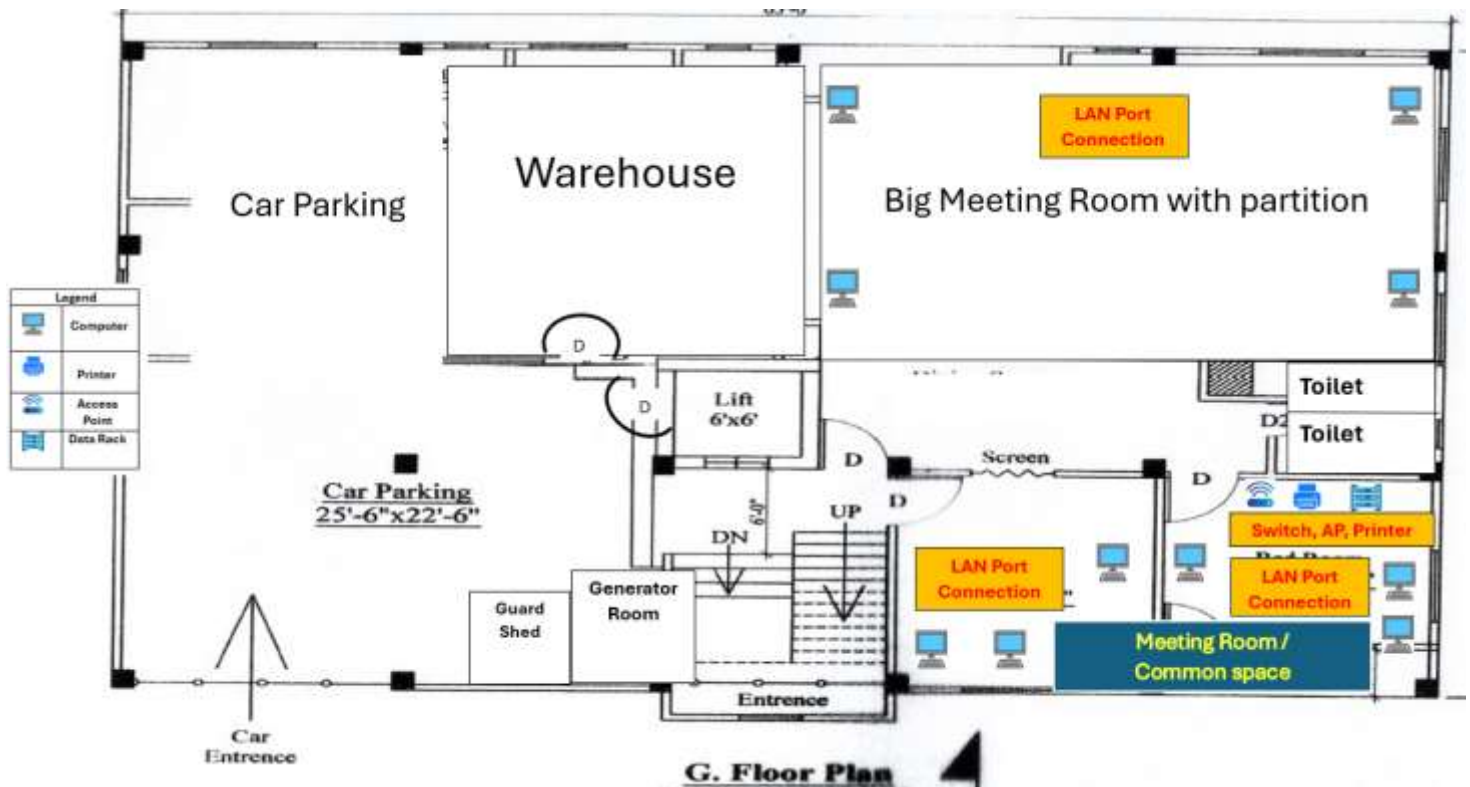


## Detail Floor Diagram:

### A. 2<sup>nd</sup> Floor:



### B. Ground Floor:



### Equipment needs for office:

| Sl# | Equipment                   | 2 <sup>nd</sup> Floor | Ground Floor | Remarks |
|-----|-----------------------------|-----------------------|--------------|---------|
| 1.  | Mesh WiFi Router            | 3 nos.                | 1 no.        |         |
| 2.  | 24 Port PoE Switch          | 1 no.                 |              |         |
| 3.  | 16 Port Non-PoE Switch      | 2 nos.                | 1 no.        |         |
| 4.  | Customized Wall-mount Shelf | 3 nos.                | 1 no.        |         |
| 5.  | UPS (1000 VA)               | 1 no.                 |              |         |
| 6.  | UPS (650 VA)                |                       | 1 no.        |         |

### End user LAN connections to be terminated

#### At Flat-A (2<sup>nd</sup> floor)

1. LAN Connection: User (11 nos.) + Printer (2 nos.) + AP (1 no.) = 14 nos.

#### At Flat-B (2<sup>nd</sup> floor)

1. LAN Connection: User (12 nos.) + Printer (2 nos.) + AP (1 no.) = 15 nos.

#### At Flat-C (2<sup>nd</sup> floor)

1. LAN Connection: User (7 nos.) + Printer (2 nos.) + AP (1 no.) = 10 nos.

#### At Ground Floor

1. LAN Connection: Meeting room (4 nos.) + User (6 nos.) + Printer (2 nos.) + AP (1 no.) = 13 nos.

**Estimated equipment / accessories required for this project (BoQ):**

| Sl | Product Description  | Quantity  | Unit Price | Total Price | Remarks   |
|----|--|-----------|------------|-------------|-----------|
| 1  | Mesh WiFi Router   | 4         |            |             |           |
| 2  | 24 Port PoE Managed Switch   | 1         |            |             |           |
| 3  | 16 Port Non-PoE Switch   | 3         |            |             |           |
| 4  | UPS (1000 VA & 650 VA)   | 1+1       |            |             |           |
| 5  | Wall-mount Shelf to Host Switch (customized, simple)   | 4         |            |             |           |
| 6  | Cat6 Cable (Box) 305m  | 6         |            |             | At Actual |
| 7  | RJ 45 Connector  | 100       |            |             |           |
| 8  | Cat6 1-Port Face Plate with Shutter, Modular Jack and Plastic Back cover   | 48        |            |             | At Actual |
| 9  | Cat6 3M patch cord   | 50        |            |             |           |
| 10 | Plastic Wiring Channel, flexible pipe with fitting accessories (Screw, royal plug and others)  | At Actual |            |             | At Actual |
| 11 | Total Installation:<br>Total User & Printer Data cable around 48 nos. nodes.<br>Switch to Switch link (3 nos.), Switch to AP link (3 nos.)<br>Cable installation, reorganize, testing and commissioning, Marking, Labeling, layout documentation etc.as per outlined in the scope of work. | At Actual |            |             | At Actual |
| 12 | ISP Broadband line installation  | 1         |            |             |           |
| 13 | Others (if any)  | At Actual |            |             | At Actual |
|    | <b>Total</b>   |           |            |             |           |

**Evaluation Criteria:**

The service provider will be evaluated based on the following weight: 100 marks.

- Technical Score: 70
- Financial Score: 30

**Technical Evaluation Criteria : 70 Marks**

| Criteria   | Score |
|--|-------|
| Similar work experience                          | 30    |
| Work perform Timeframe                           | 20    |
| Supplies materials quality & specification match | 20    |

**Financial Evaluation Criteria : 30 Marks**

The lowest bidder will be assigned with full/highest marks that is 30 and the subsequent highest bidders will get proportionate lower score out of 30.

**Application process:**

If you are interested and feel competent to carry out this very exciting work, please submit your technical and financial proposal in two separate documents.

**Technical Proposal:**

1. Organizational profile with relevant work experience
2. Proposed Timeline
3. Product technical details (brand name, origin, warranty etc.) and solution

**Financial Proposal:**

1. Breakdown cost as per BoQ
2. Financial costs must be inclusive of all associated costs i.e. vat/tax/ delivery costs etc.